



‘Old Heath is a safe place for your child
to learn, achieve and enjoy success.’

ANTI-BULLYING POLICY

NOVEMBER 2024
Adapted from Anti Bullying Alliance Policy

‘TRY OUR BEST, THINK OF OTHERS,
TELL THE TRUTH & SHOW RESPECT’

Our Vision Statement

Our children have all sorts of dreams and ideas about their future. As a school community we want to help every child on their path to their future.

Our children believe

*'We want to be kind-hearted, patient, trust-worthy and have a sense of humour!
We understand the importance of equality, including others and being included ourselves.
We want to feel safe & protected and others to feel the same too.
Treating others as we would expect to be treated.
We need to work hard to learn and be proud of our achievements.
Ensure that we are bold in speaking up for ourselves
but that we can also listen to others and their ideas & opinions.
We need to develop our ability to persevere with difficulties and be resilient.
We need an awareness of 'taking a risk' and being 'adventurous' in our thoughts and actions. Throughout our school years and into our futures we want to be valiant, confident, determined and to be positive about our amazing selves!'*

Old Heath Community Primary School promotes values which reject bullying behaviour and promote co-operative behaviour. Tackling bullying matters.

Statement of Intent

Old Heath Community Primary School is committed to providing a supportive, caring and safe environment in which all children are free from the fear of being bullied. As a school we take bullying and its impact seriously. Bullying of any form is not tolerated in our school, whether carried out by a child or an adult.

Staff, children and parents or carers will be made aware of the school's position on bullying. Bullying behaviour is unacceptable in any form. The school has high expectations of outstanding behaviour and we consistently challenge any behaviour that falls below this. Anyone who knows that bullying is happening is expected to tell a member of staff.

Any child who is a victim of bullying will be dealt with in a sympathetic manner. If bullying is suspected or reported, the incident will be dealt with immediately by the member of staff informed, and then discussed with the headteacher. A clear account of the incident will be recorded in the behaviour logs. All staff will be informed so that close monitoring of all parties and the situation can begin.

What is bullying?

We recognise that many children and young people will experience 'relationship conflict' in their everyday relationships with other children and young people and as a school we are committed to developing empathy and the life skills to manage relationships in a proactive and responsible way.

For Old Heath Community Primary School, our definition of bullying is:

"The repetitive, intentional hurting of one person or group by another person or group, where the relationship involves an imbalance of power. It can happen face to face or online"



Why is it important to respond to bullying?

There is considerable evidence to show that bullying has both short term and longer term impact on children. Bullying impacts on children' wellbeing, can impact on attendance and become a significant barrier to learning. Bullying is associated with lower levels of school engagement and achievement both in primary and secondary schools and can lead to mental health concerns such as anxiety and depression.

Bullying is unacceptable. Our school will respond promptly and effectively to reported incidents of bullying.

In our school community:

- Everybody has the right to be treated with respect.
- Everybody has the right to feel happy and safe.
- No-one deserves to be a target of bullying.
- Children who bully need to learn different ways of behaving.

National research has shown that some groups of children are particularly vulnerable to bullying these include children with SEND, looked after children, children from minority ethnic groups or faiths, young carers, LGBT children and those perceived to be LGBT.

Types of bullying behaviour

Bullying can take many forms:

- Emotional - being unfriendly, excluding, tormenting, threatening behaviour
- Verbal - name calling, sarcasm, spreading rumours, teasing, use of derogatory language
- Physical - pushing, kicking, hitting, punching or any use of violence
- Extortion - demanding money/goods with threats
- Online – use of social media, messaging and calls. Misuse of associated technology e.g photos and videos.
- Racist - racial taunts, graffiti, gestures
- Sexual - unwanted physical contact, sexually abusive comments
- Homophobic or bi-phobic - bullying because of sexuality or perceived sexuality
- Transphobic – because of gender identity or perceived gender identity

Preventing Bullying

We foster a clear understanding that bullying, in any form, is unacceptable. We believe that preventing bullying is the responsibility of our whole school community and when there are incidents of bullying, we will work together to deal with the situation and to learn from what has happened.

In our school we do this by:

- Involving the school community in developing our policy including a child/ pupil friendly version of our policy.
- Using assemblies and circle time in class to ensure that children understand the differences between relational conflict and bullying.
- Building a positive ethos based on respecting and celebrating all types of difference in our school.
Creating a safe and happy environment, with consequent positive relationships that have an impact on learning and achievement.
Having a positive ethos that all children, staff and parents understand.
- Work in school which develops empathy, social skills and emotional understanding e.g. PSHE, Citizenship, social and emotional learning programmes, circle time, peer mediation and playground buddies.
- Secure the safety of the target of bullying.
- Take actions to stop the bullying from happening again.
- Whole school learning - reflection on what we have learnt
- Think about any safeguarding concern and report concerns to Designated Safeguarding Lead.
- Provide assurances to child that concerns have been listened to and action will be taken.
- Consider who else is involved and what roles they have taken.
- Send clear message that the bullying must stop.
- Work with both parties to find solutions. Identify the most effective way of preventing reoccurrence and any consequences.
- Reflect and learn from bullying episodes –consider what needs to happen next to prevent future bullying e.g. PSHE, training etc.
- Raising awareness of online bullying through regular e-safety lessons.
- Adopting a social model approach to bullying. Diversity is valued and everyone is included in our school.
- Focussed work with individuals and groups of children where required to support understanding and development of social skills e.g. social skills groups
- Ensuring playground and midday staff are trained and we have a range of activities at lunchtime to promote positive play.
- Offering training to all school staff around bullying, including specific guidance on those groups who are most likely to be bullied.

Reporting bullying

In our school children are encouraged to talk to staff when they are unhappy or have concerns. Children in our school understand that they have a right to feel and be safe and a responsibility to support others to feel and be safe.

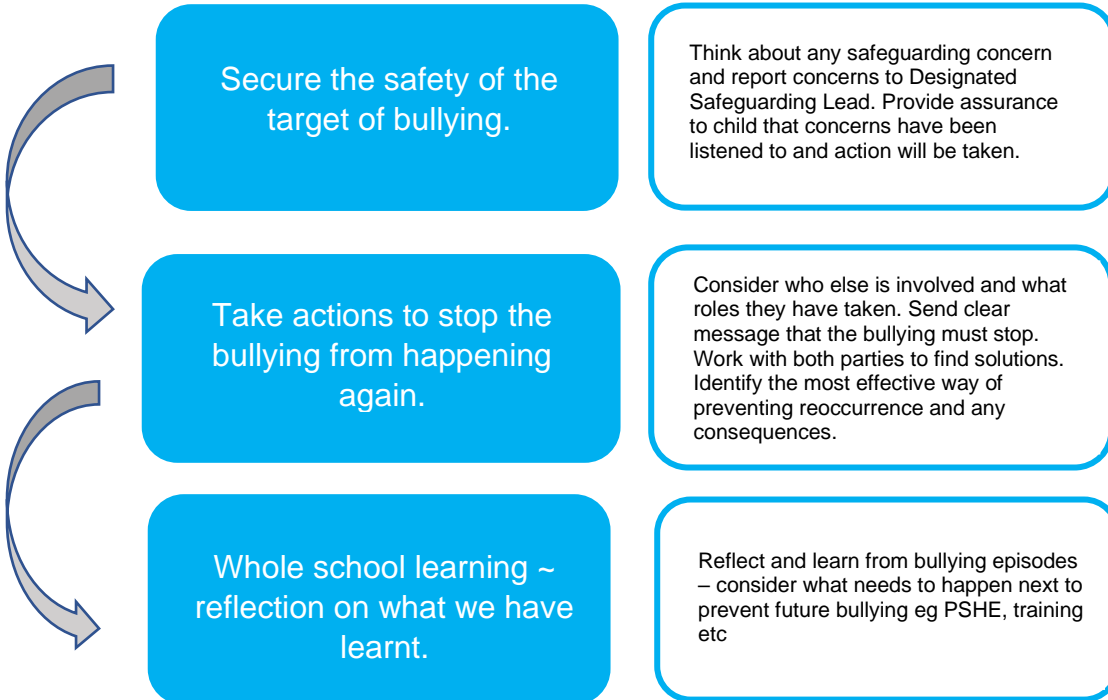
Children are encouraged to report bullying to:

- A trusted adult
- Their class teacher/TA

- A good friend they trust to help them talk to an adult in school

Children are taught that it is important to talk to a trusted adult if bullying is taking place outside of school. Parents are also encouraged to report concerns and bullying to the class teacher. When children report their concerns, our staff will listen and take action as necessary. We work with those children involved as far as possible in finding solutions.

Responding to Bullying



We monitor and review all bullying incidents to determine any patterns or trends that may require further action. Our children have opportunities through assemblies, class discussions to feedback on how safe and happy they feel at school.

All staff are required to complete an incident reporting and monitoring form when dealing with incidents of bullying. This should be completed as soon as possible and given to the Designated Safeguarding Lead.

Procedures for parents:

- If a parent has any concerns about their child they should speak to the class teacher immediately. The headteacher is always informed of any bullying concerns and monitors the situation carefully.
- The school will work with both the child and the parents to ensure that any bullying is stopped and that support is given where needed.
- Parents should not confront the bully or their parents. This can complicate the situation and distress the pupil.
- The school will deal directly with all children involved and their parents directly as necessary. Parents will be kept informed of any actions the school is taking.
- If parents feel that their concern has not been dealt with appropriately, they should follow the school's complaints policy.

All members of the school community, including children, staff, parents and governors, are expected to treat everyone with dignity respect at all times. This includes both face-to-face contact and online.